

**Reflections on Israeli
migrations:
Those who come
and those who go**

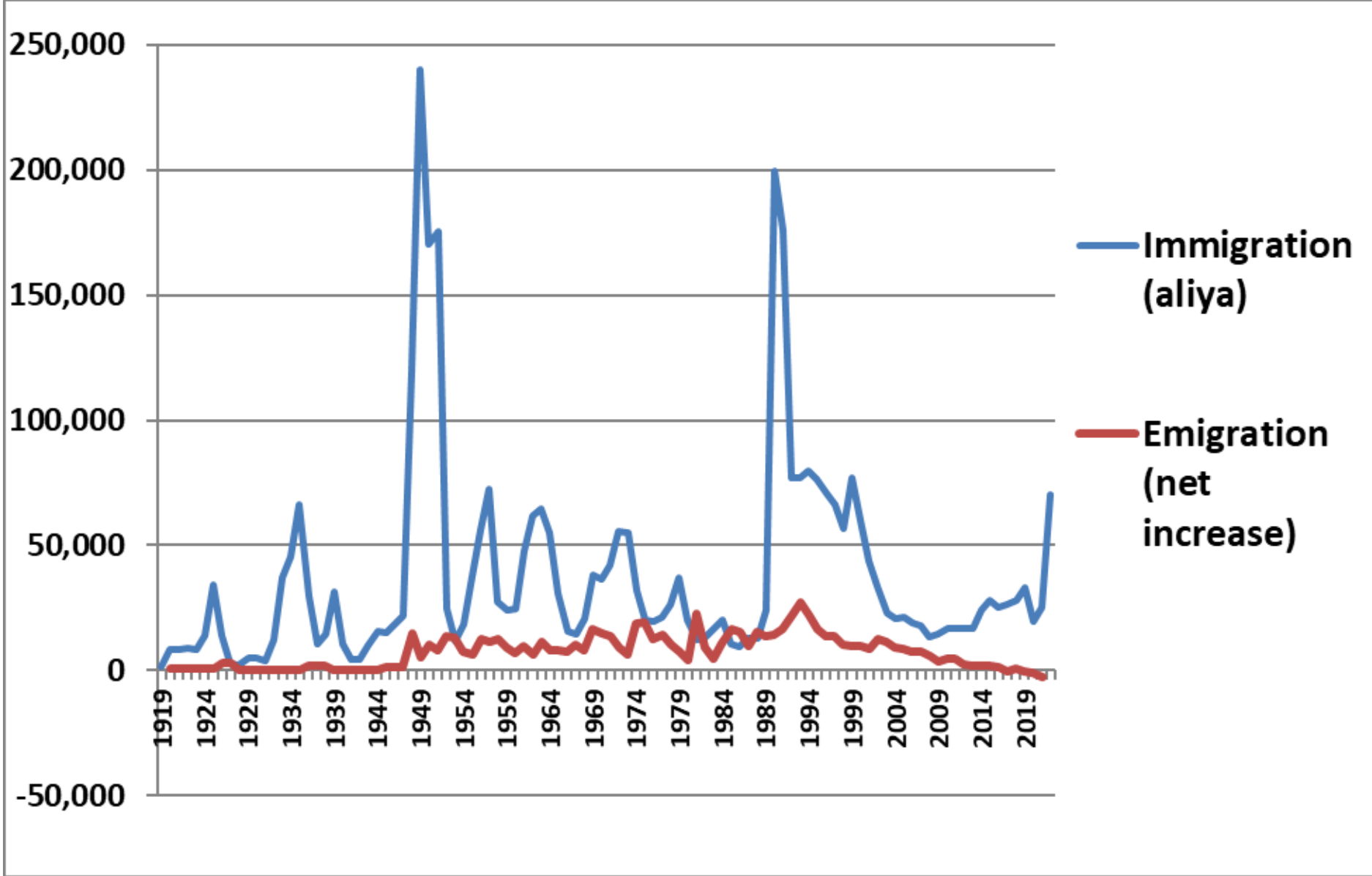
Sergio DellaPergola

The Hebrew University of Jerusalem

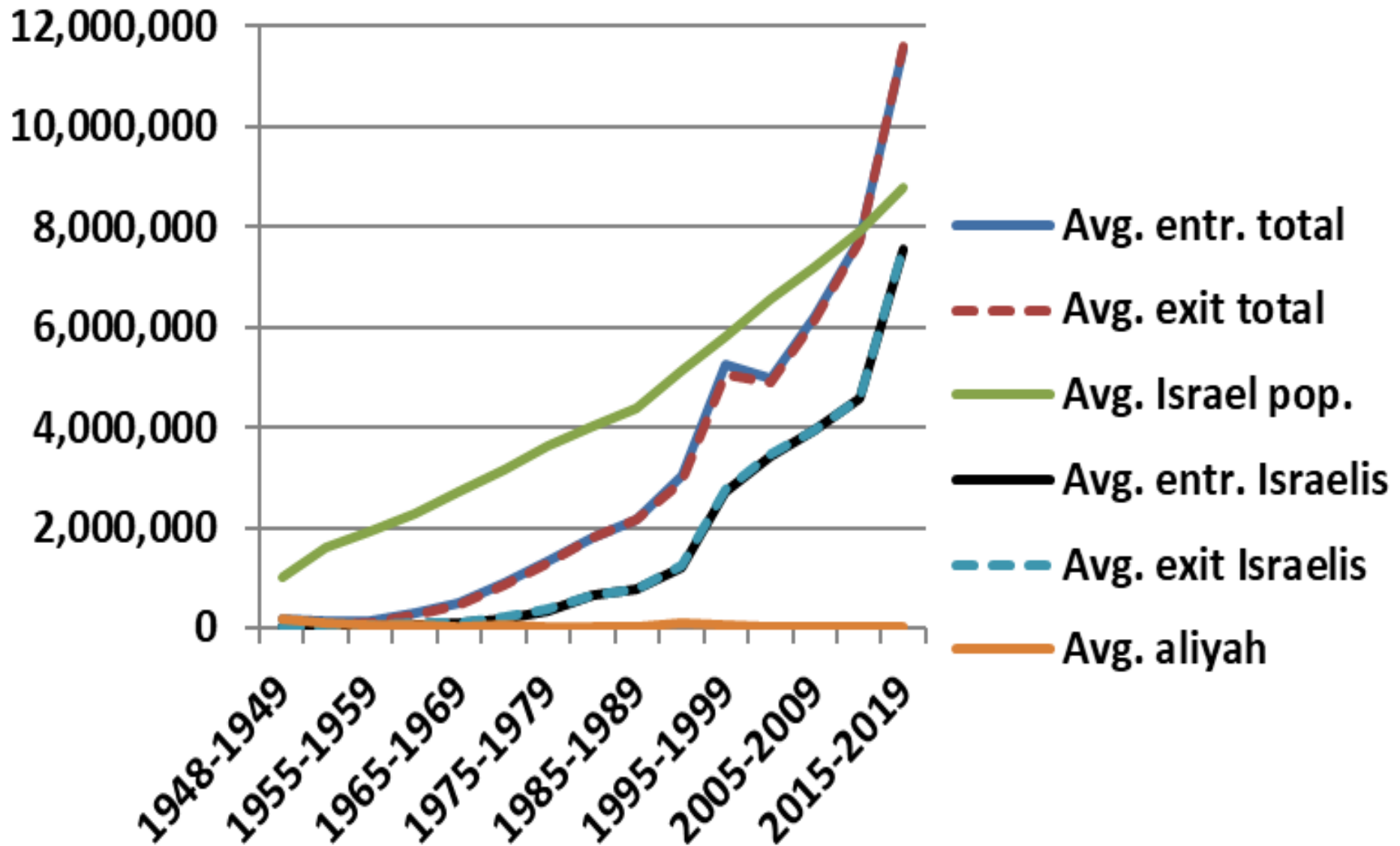
Oranim Academic College, December 29, 2022

MAIN MIGRATION PATTERNS

NEW IMMIGRANTS TO, AND NET EMIGRATION FROM ISRAEL 1919-2022



YEARLY ENTRIES AND EXITS, ISRAEL, 1948-2019



נתוני עלייה – זכאי שבות שאינם יהודים



ארץ עלייה	יהודי	אינם רשומים כיהודים	אחוז היהודים	סה"כ	סה"כ השוהים בישראל*	אחוז השוהים בישראל
רוסיה	28,610	59,378	32.5%	87,988	49,392	56.1%
אוקראינה	14,609	28,298	34.0%	42,907	35,743	83.3%
צרפת	19,163	1,039	94.9%	20,202	14,359	71.1%
ארצות הברית	17,409	1,091	94.1%	18,500	14,088	76.2%
בלארוס	2,016	4,680	30.1%	6,696	5,619	83.9%
ברזיל	3,021	690	81.4%	3,711	3,012	81.2%
בריטניה	3,420	258	93.0%	3,678	2,859	77.7%
ארגנטינה	2,986	501	85.6%	3,487	2,973	85.3%
דרום אפריקה	2,054	159	92.8%	2,213	1,887	85.3%
אתיופיה	1,844	125	93.7%	1,969	1,944	98.7%
קנדה	1,758	134	92.9%	1,892	1,481	78.3%
יתר הארצות	15,794	6,822	69.8%	22,616	17,297	76.5%
סה"כ	112,684	103,175	52.2%	215,859	150,654	69.8%

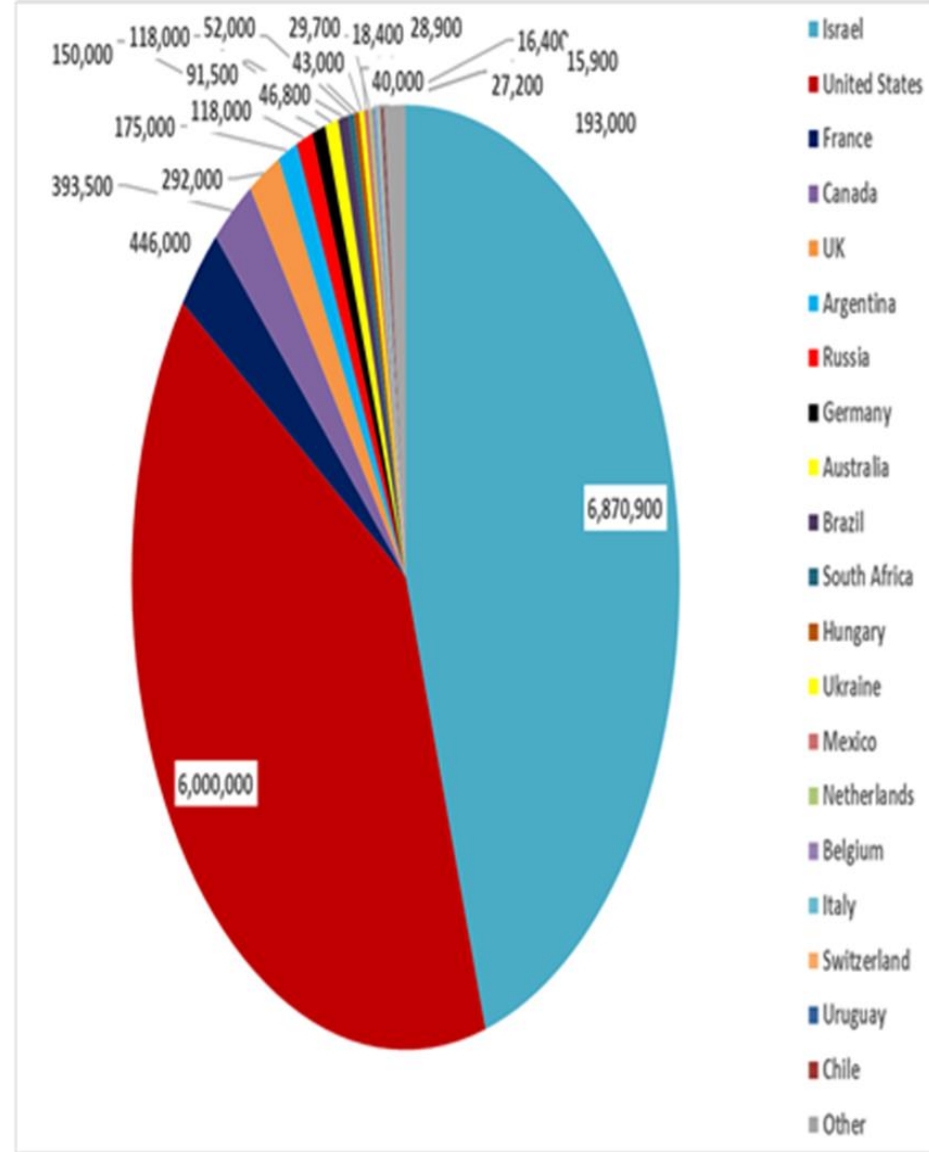
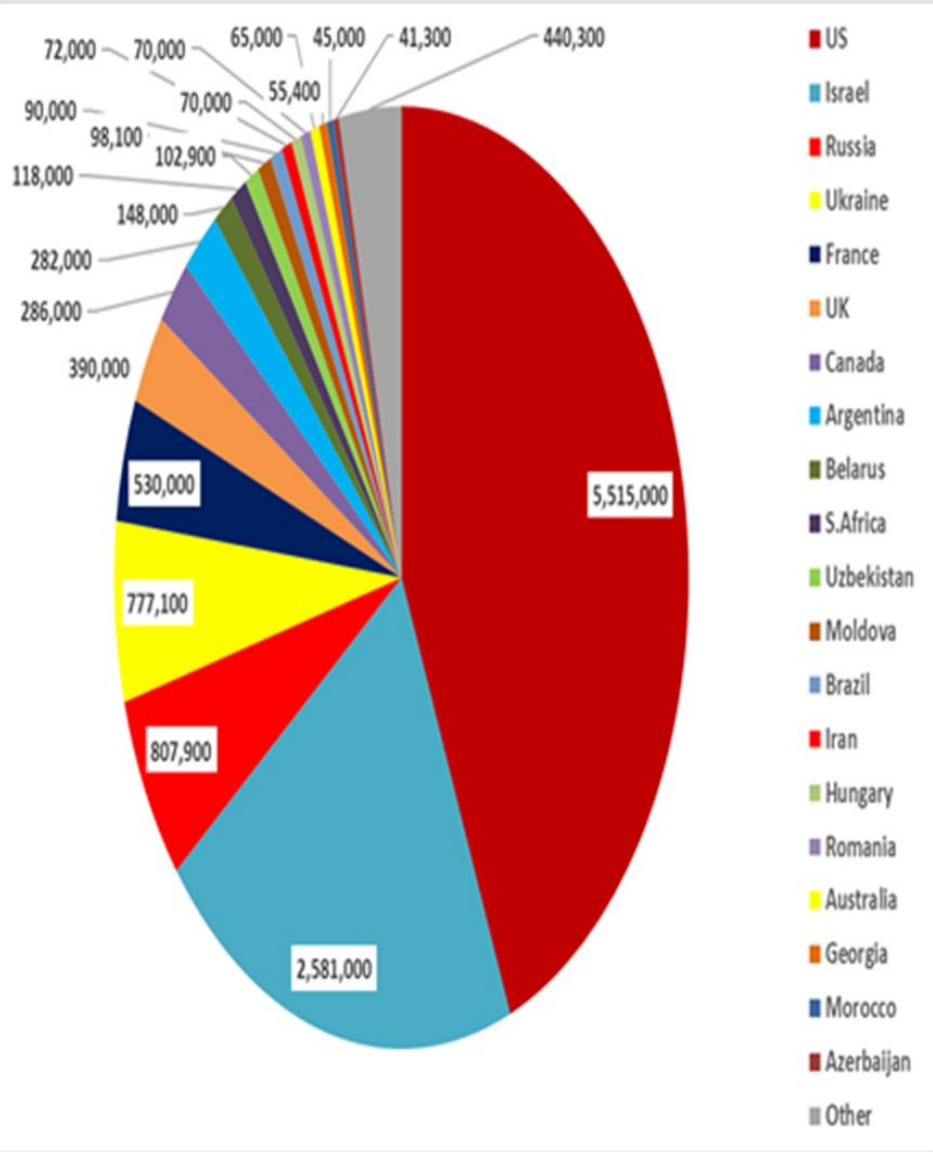
עולים מכוח חוק השבות לפי שנת עלייה, דת נוכחית וארץ עלייה 2016-2022, נכון ליום 30.11.22

JEWISH RECENT HISTORY AND GEOGRAPHY

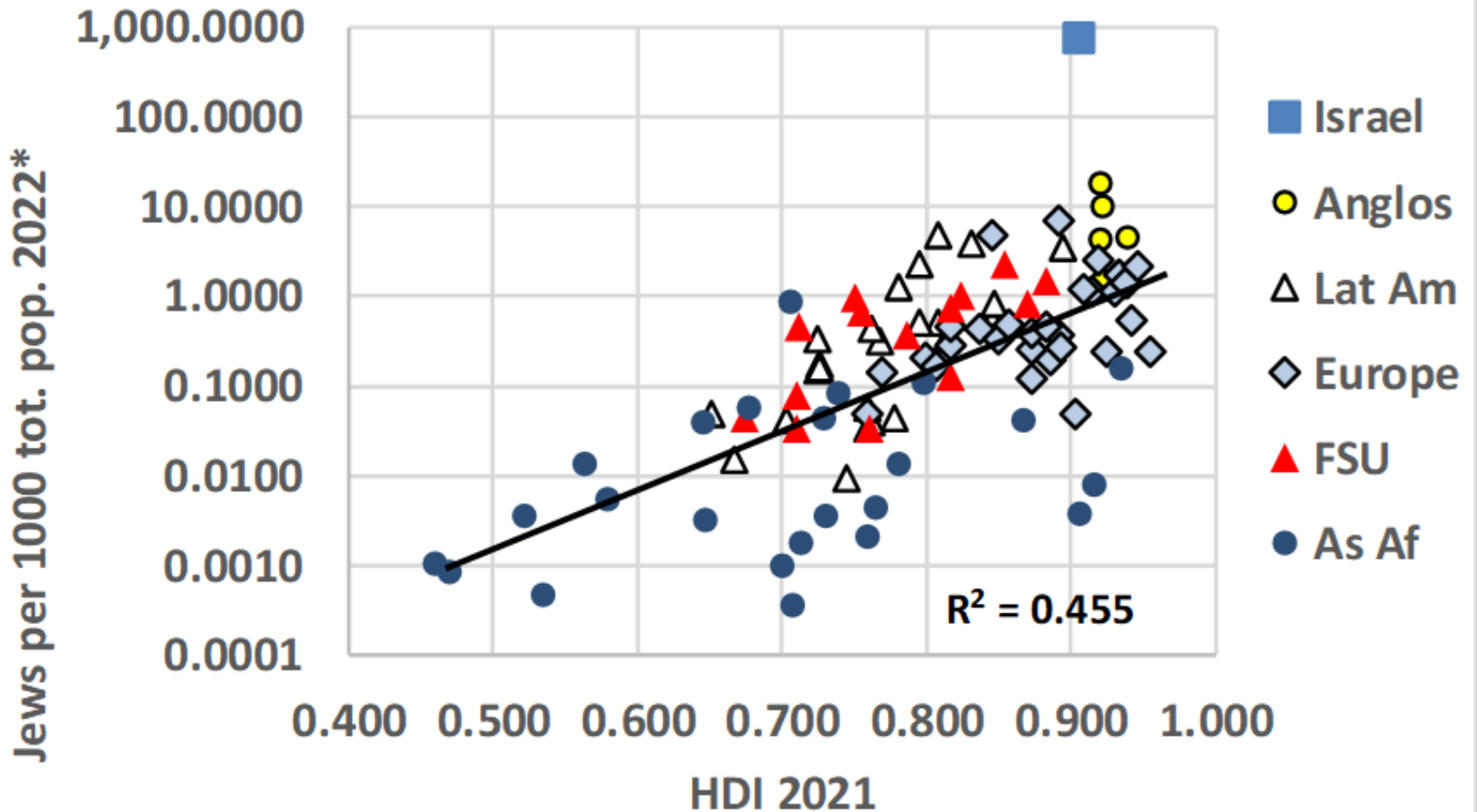
25 Largest core Jewish populations, 1970 and 2021

1970

2021

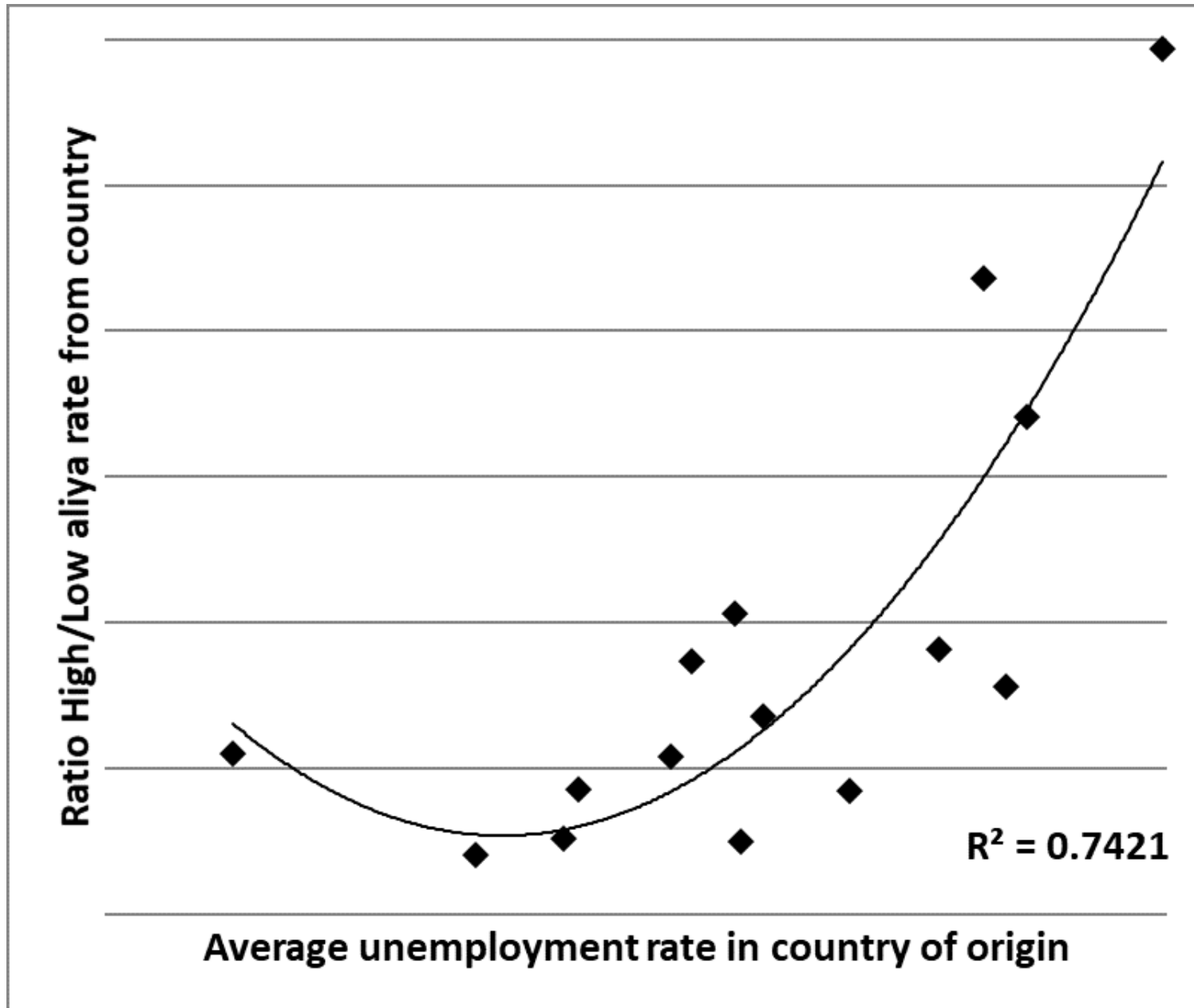


WORLD COUNTRIES BY HDI AND PERCENT OF JEWS IN TOTAL POPULATION 2022

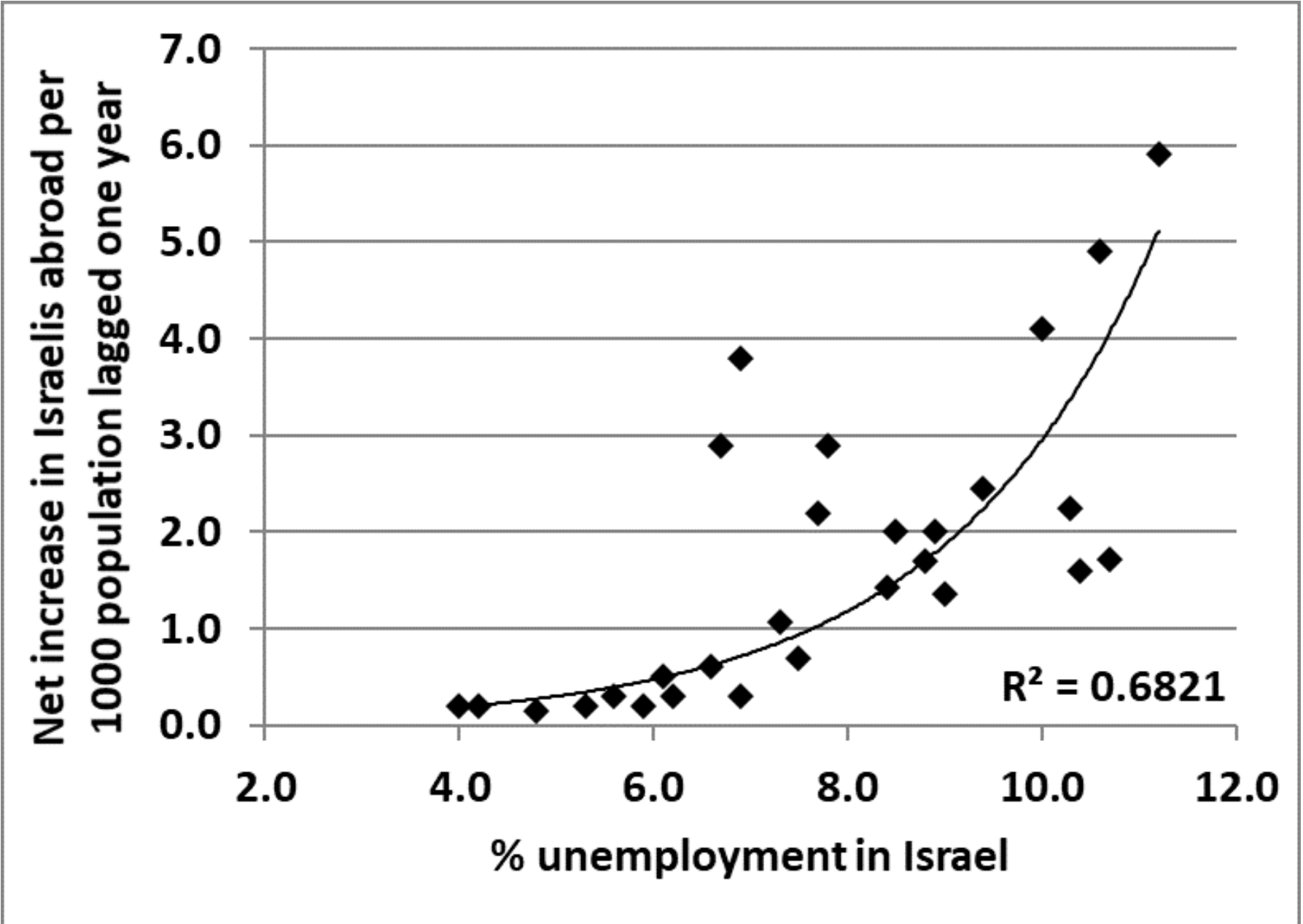


RETENTION, PULL, AND PUSH

Ratio of high to low migration rates to Israel per 1000 Jews in 16 countries, by level of unemployment in country, 1991-2020

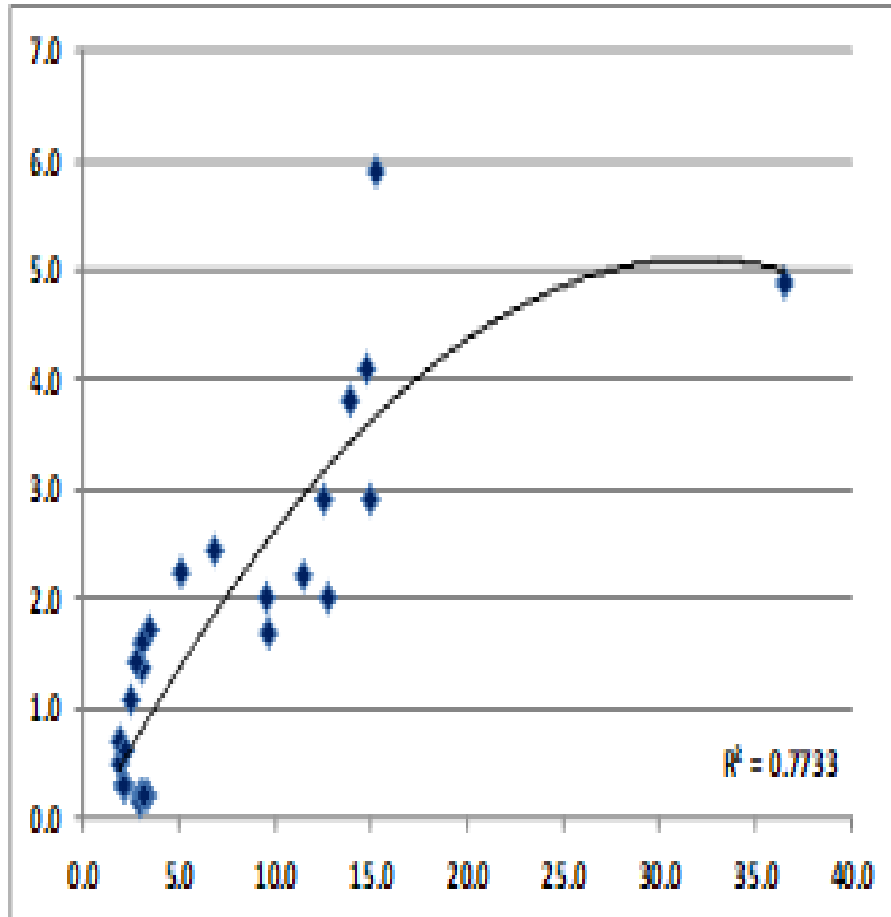


Emigration from Israel, by level of unemployment, 1991-2020



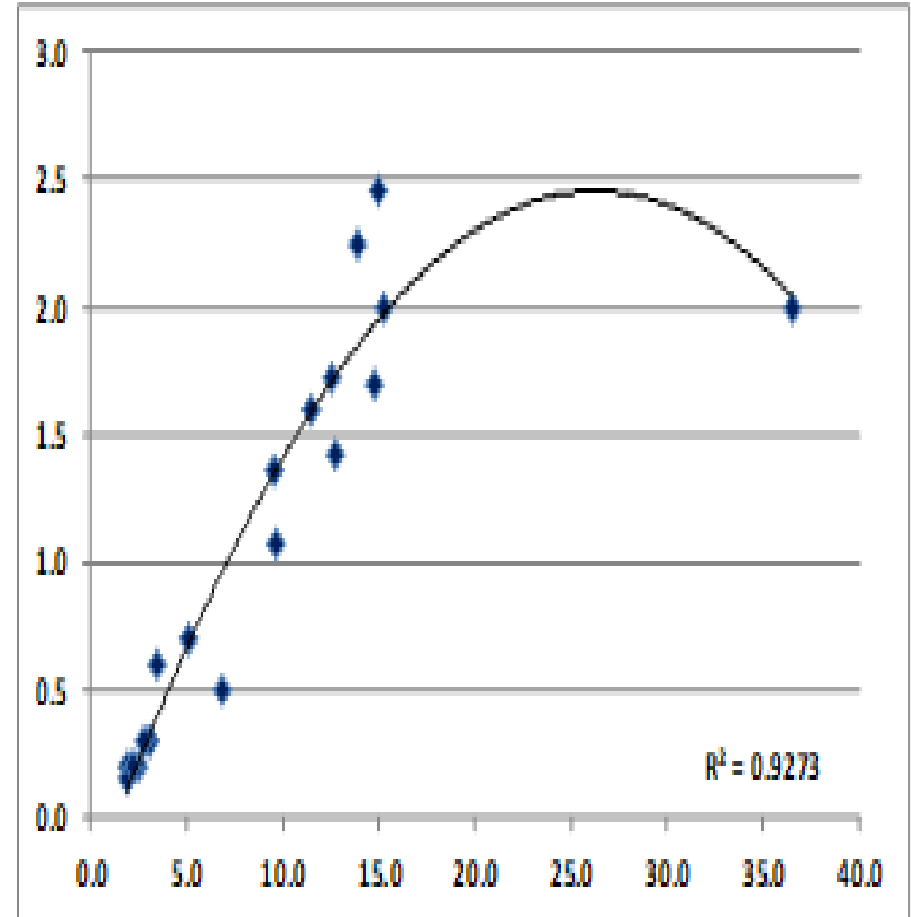
RELATIONSHIP BETWEEN ANNUAL INMIGRATION AND EMIGRATION RATES PER 1000 POPULATION IN ISRAEL 1991-2019, LAGGED 1 AND 8 YEARS

Net Increase In Israells abroad per 1000 Israel population lagged 1 year



Immigration rate per 1000 - 28 years

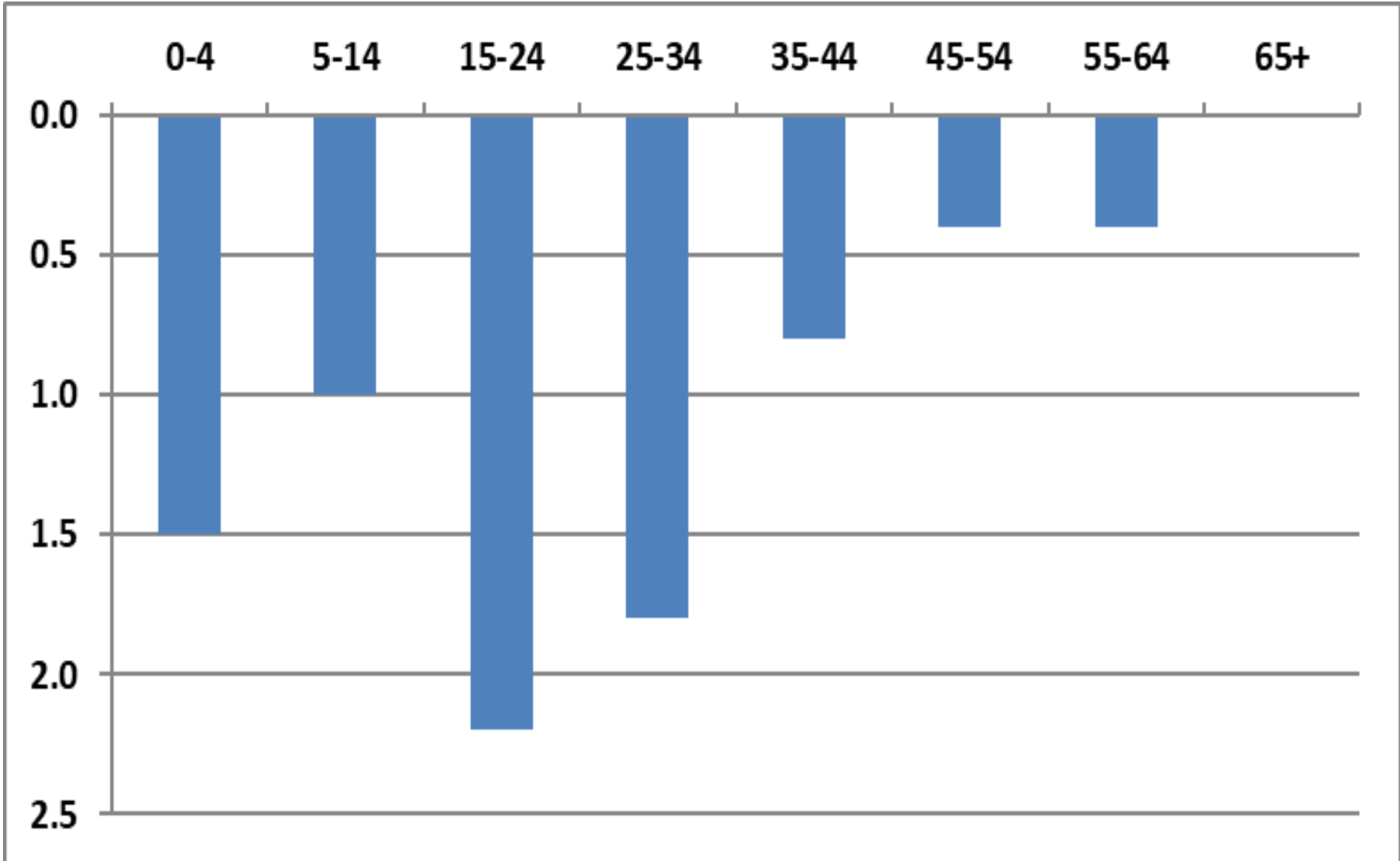
Net Increase In Israells abroad per 1000 Israel population lagged 8 years



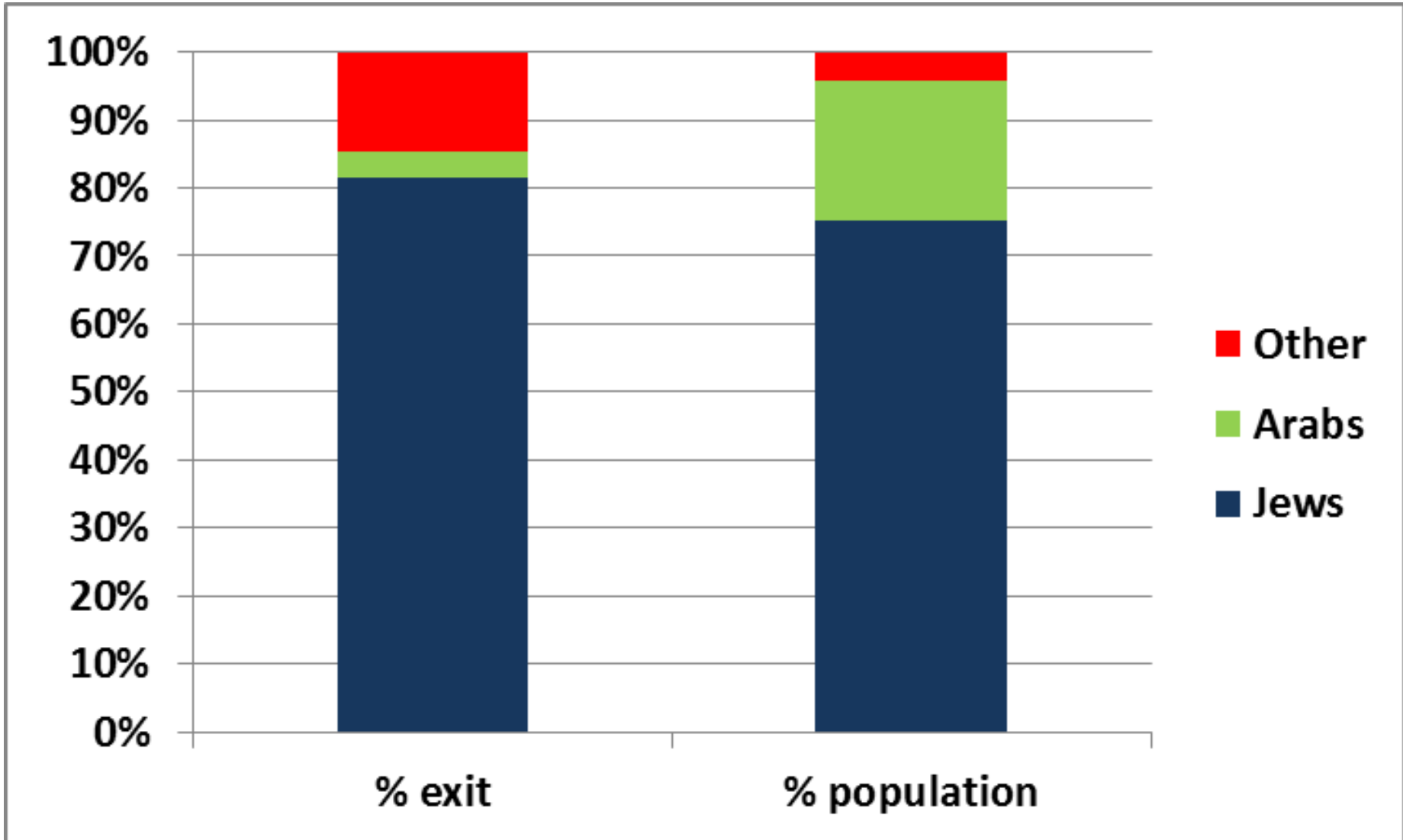
Immigration rate per 1000 - 21 years

SELECTIVITY PATTERNS OF EMIGRATION FROM AND RETURN TO ISRAEL

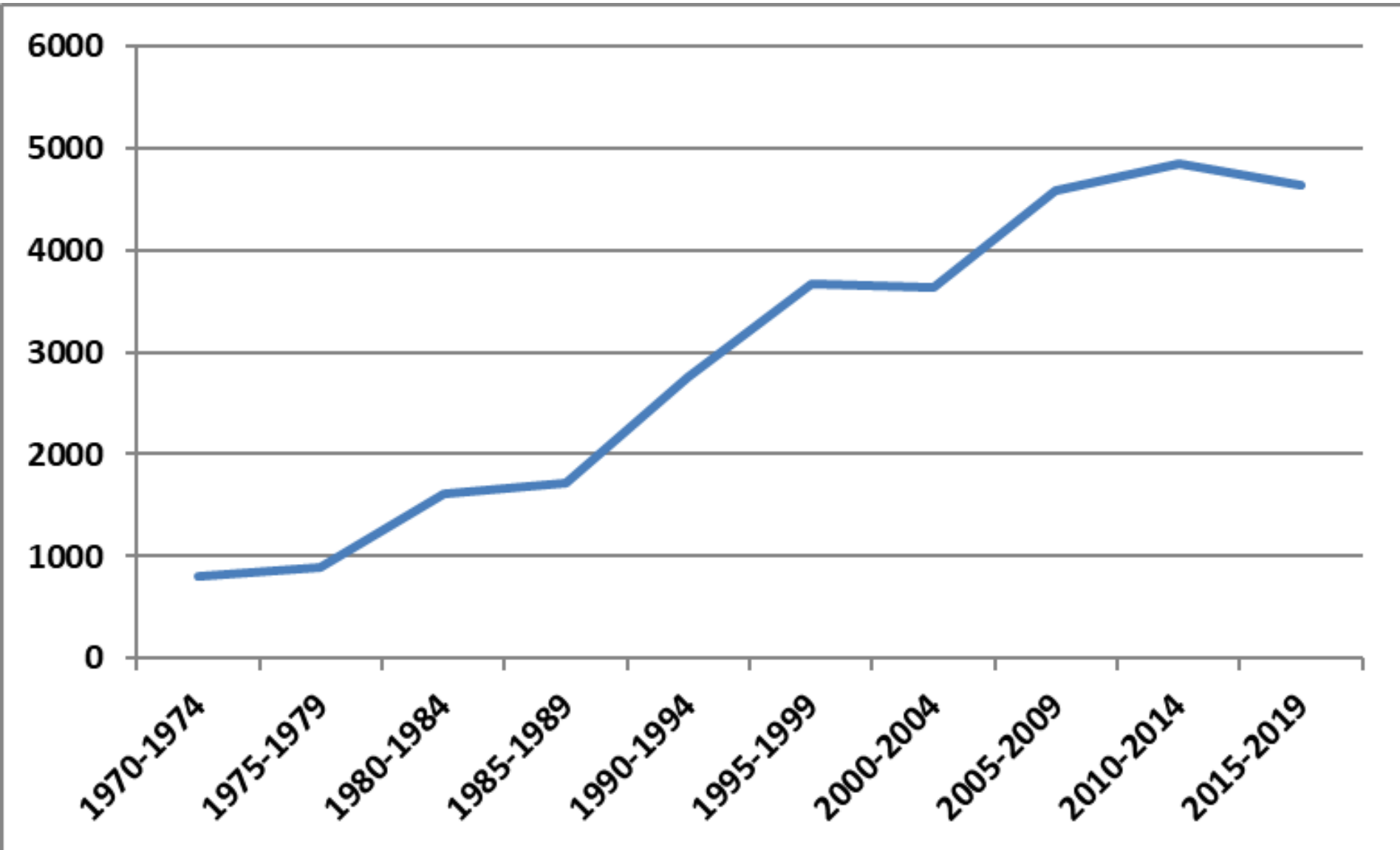
NEGATIVE BALANCE OF LONG-TERM EXITS AND RETURNS, BY AGE – ISRAEL, 2013, THOUSANDS



LONG TERM DEPARTURES FROM ISRAEL, BY MAJOR ETHNORELIGIOUS GROUPS - 2014



Immigrant citizens, yearly average, 1970-2019



TRANSNATIONAL JEWISH IDENTITIES AND ISRAEL

SYNTHESIS OF 31 IDENTITY MARKERS AMONG THE UNITED STATES JEWS, BY COUNTRIES OF ORIGIN, 2013

Origin	Ideational		Behavioral		Total		
	2 Higher	2 Lower	2 Higher	2 Lower	2 Higher	2 Lower	Difference
Total markers	30	30	32	32	62	62	=
Israel	7	5	10	1	17	6	+11
Asia/Africa	6	3	6	0	12	3	+9
Canada	3	5	10	0	13	5	+8
Europe	2	6	3	3	5	9	-4
FSU	5	2	1	9	6	11	-5
Latin America	5	3	1	9	6	12	-6
US	2	6	1	10	3	16	-13

*Highest value of distribution. Source of data: Pew Research Institute, Author's processing

Jews in Europe, the US and Israel are rather similar with respect to the essential aspects of Jewish identity

