

Microsoft
Live@edu
Create a collaborative campus

שרותים חדשנים למגזר החינוך



Ofer Daliot
odaliot@microsoft.com

Microsoft Israel



19th, 20th Century Education

Microsoft®
Live@edu
Create a collaborative campus



האקדמיה של ימינו

Create a collaborative campus

Millions of ideas.

Thousands of students.

Hundreds of educators and administrators.

On a virtual campus.

All creating, connecting, coordinating, communicating and collaborating in the service of teaching and **LEARNING.**



Microsoft

Software



Best of both worlds

User in control

Deployment choices for IT



Services

Embrace consumer technology

Extend tools and platform to cloud

Experience across multiple devices

Best-in-class SLAs and IT governance

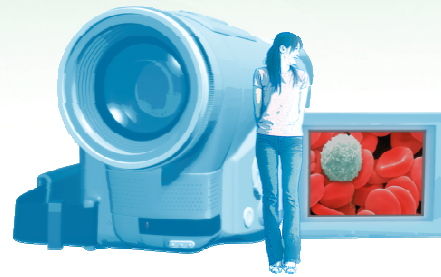


Collaborative Campus – capabilities The New ERA

Microsoft®
Live@edu
Create a collaborative campus



Connect



Create



Coordinate



Communicate



Collaborate

Key Scenarios

Connected
Devices



Connected
Entertainment



Connected
Learning



Connected
Productivity



Connected
Development



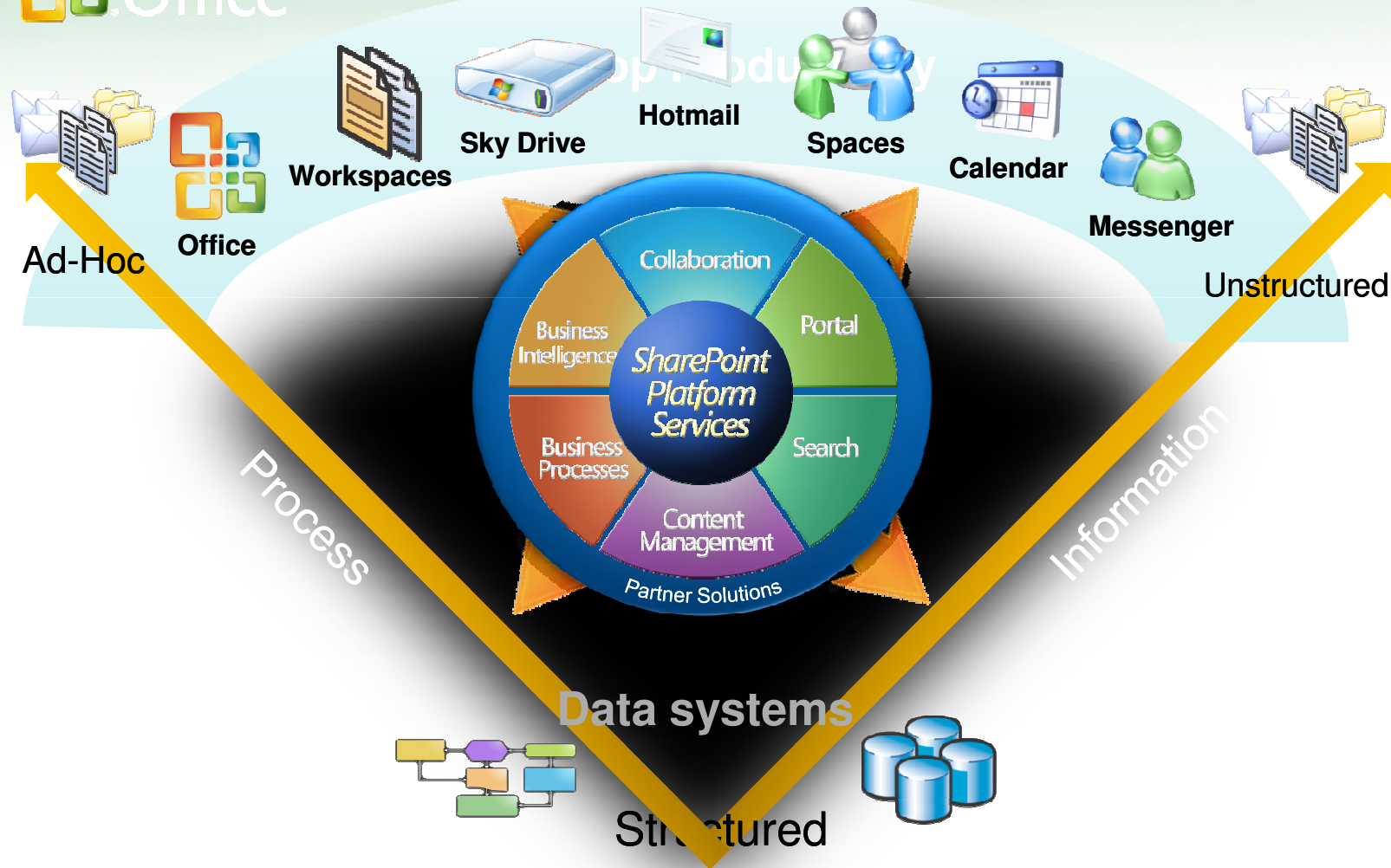
Next Generation Approach to Teaching and Learning

Microsoft®
Live@edu
Create a collaborative campus

Microsoft®
Office Live

Microsoft®
Office

Windows Live™



The Collaborative Campus

Microsoft
Live@edu
collaborative campus



“LEARNING GATEWAY”



LIVE@EDU

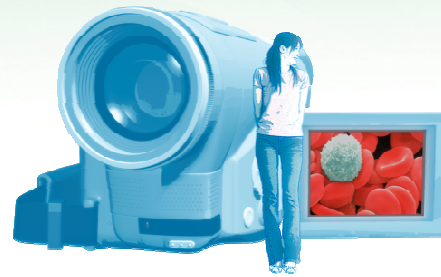


21st Century Collaborative Campus

Microsoft
Live@edu
Create a collaborative campus



Connect



Create



Coordinate



Communicate



Collaborate

שימוש בכלים סטנדרטיים בתוך הפורטל עם שילוב של נכחות וזמינות לשיחות בין שותפים ע"ג הרשת תוך שמירה על זכויות יוצרים של התוכן עם אבטחת מידע מלאה

Microsoft
Live@edu
Create a collaborative campus

Built-in Office Integration

Workspace Integration

Instant Messaging Integration

Rights Management Integration

The screenshot displays a Microsoft Internet Explorer browser window with several overlapping windows and panels:

- Permission Dialog:** A dialog box titled "Permission" with a "Restrict permission to this document" checkbox checked. It lists users with permissions: stevemasters13@hotmail.com, lmitchel@msdemos.com, and jworden@msdemos.com. It also includes an "Additional permissions for users" section with checkboxes for "This document expires" (set to 11/25/2003), "Print content", "Allow users with read a...", and "Access content program".
- Instant Messaging Window:** A "Linda Mitchell - Conversation" window showing a message from Linda Mitchell: "All Contoso Instant Messages are logged and archived." Below the message is a text input field containing "Hey Linda I need some help..." and a "Send" button. A "Send" button is also visible at the bottom of the window.
- Shared Workspace Panel:** A "Shared Workspace" panel on the right side of the browser window. It shows the "Northwind Bundle Pro..." site. The "Members" list includes Steve Masters (Online), Linda Mitchell (Online), and Joe Worden (Not Online). A "Send e-mail to all members..." button is visible at the bottom of the panel.
- Microsoft Word Window:** A "Document Template (Read-Only) - Microsoft Word" window is partially visible behind the other windows.
- Browser Window:** The main browser window shows the "Home - Northwind Bundle Promotion - Microsoft Internet Explorer" page. The status bar at the bottom indicates "Trusted sites" and the time "2:08 PM".

A yellow circle highlights the "Shared Workspace" panel, and another yellow circle highlights the "Not Online" status of Joe Worden. A blue callout box at the bottom center contains the text "Create Document Workspace".

שיתוף פעולה בין מתרגל לסטודנט סביב אתר הקורס

Microsoft
Live@edu
Create a collaborative campus

The screenshot shows a web browser window displaying a Microsoft Live@edu site. The browser's address bar shows 'Up to Contoso Pharmaceutical'. The site has a navigation menu with 'Home', 'Documents and Lists', 'Create', 'Site Settings', and 'Help'. A sidebar on the left lists 'Documents', 'Pictures', 'Lists', 'Discussions', and 'Surveys'. The main content area includes an 'Announcements' section with a 'Welcome to the...' message, a 'Contacts' list, and a 'Tasks' section. A 'Linda Mitchell - Conversation' window is open, showing a message from Linda Mitchell and a list of actions like 'Start Camera', 'Start Talking', and 'I want to...'. A context menu is open over a document titled 'Vendor Contract', with options like 'View Properties', 'Edit Properties', 'Edit in Microsoft Office Word', 'Delete', 'Check Out', 'Version History', 'Add to My Links', 'Submit to Portal Area', 'Alert Me', 'Discuss', and 'Create Document Workspace'. A 'Personal View' window is also visible, showing 'Linda Mitchell is Online' and 'Send Instant Message...'. A 'Web Conference' window is partially visible in the background.

English, Not American
Module Home:

Integrated Workplace in Office Applications

Live Communication Integration in Office document

Personalized Experience

Integrated Presence Information

Workspace Experience

Integration With Office



Integration By Design

כלי שיתוף הגרסה החדשה בשילוב טלפוניה

Microsoft
Live@edu
Create a collaborative campus

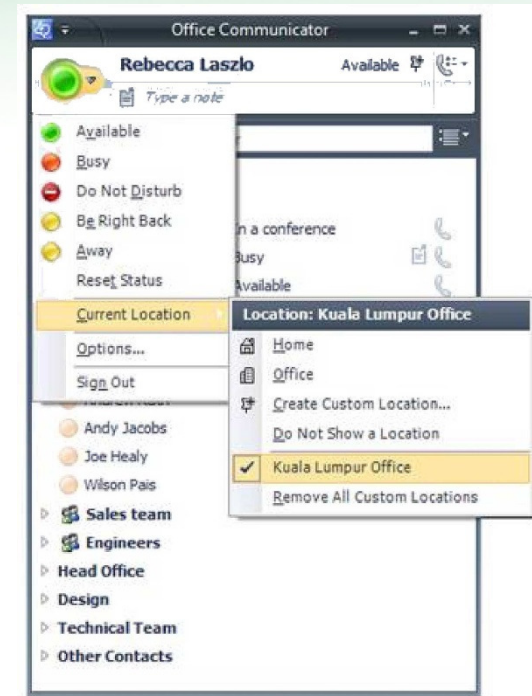
Instant messaging: option one

Microsoft® Office Communications Server provides self-hosted, secure instant messaging which you can federate with public IM Networks (Yahoo, Microsoft) and other institutions.

Real-time communication with presence, making it easy for students to know who is online and their location.

Query tutors, ask questions of helpdesk staff or discuss projects with other students.

- Microsoft® Office Communications Server



Connect

Create

Communicate

Collaborate

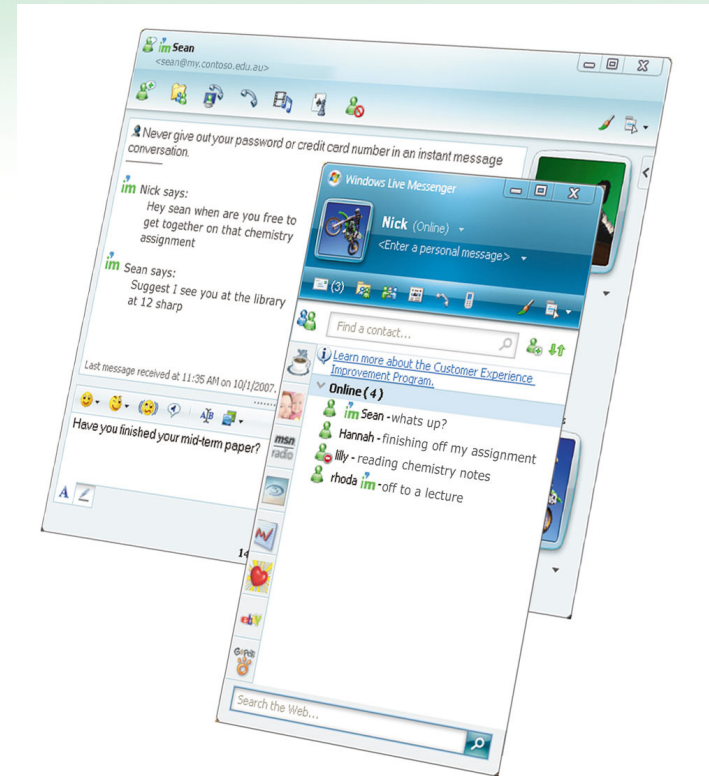
Coordinate

Instant messaging: option two

Windows Live™ Messenger is part of our complimentary suite of Microsoft® Live@edu offerings.

- It opens up the world's most popular IM network to all your students.
- Very useful for broadcasting changes to lecture times, weather and security alerts, and in many instances, it is being used to poll student opinion.

Windows Live™ Messenger
Windows Live™ Alerts



Connect

Create

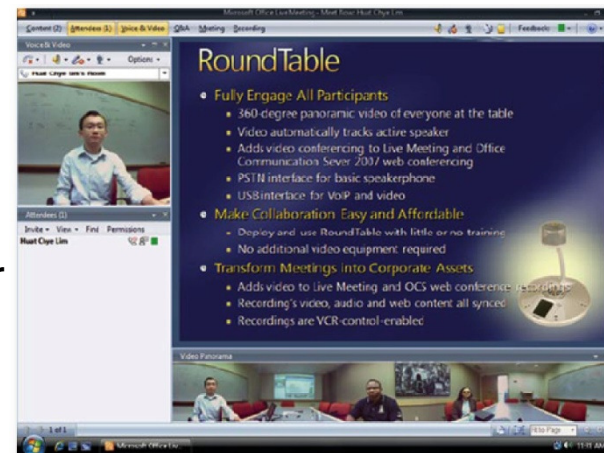
Communicate

Collaborate

Coordinate

Store and share

- Students and academics can store and share thousands of documents in real time across campus or the world with anyone who's invited. Check for presence and then click to call or message right from your secure workspace.
- Organise an online meeting or tutorial where you can track attendees and share files as you go – even if students are in an unsecured environment like at home or an Internet café.
 - Windows Live™ Spaces
 - Windows Live™ SkyDrive
 - Windows Live™ SharedView
 - Microsoft® Office Live Meeting



Connect

Create

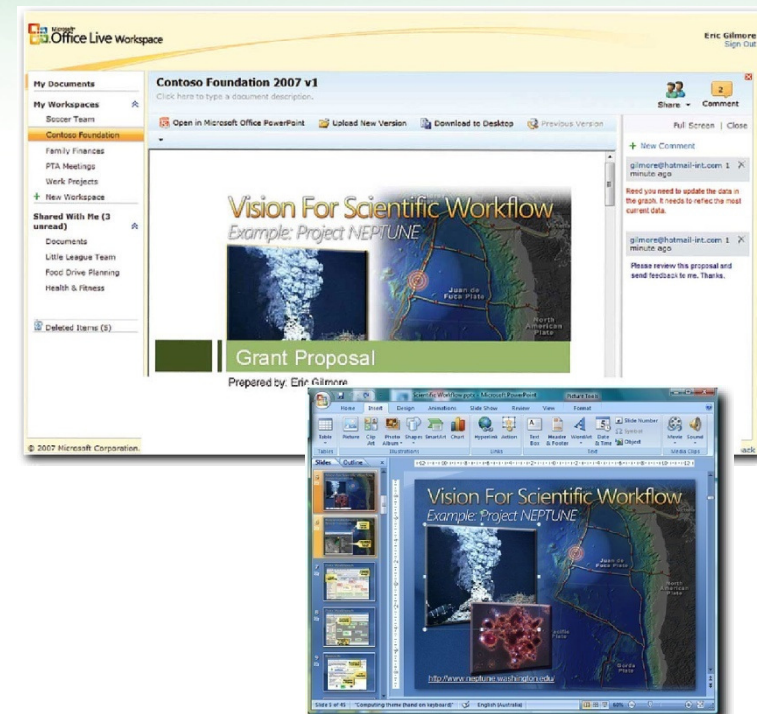
Communicate

Collaborate

Coordinate

Collaborate easily

- Microsoft® Office Live Workspace enables students and academics to store thousands of Microsoft® Office documents in one place and access them from almost any computer with a Web browser.
- They can invite other students or faculty to share their workspace and control who views, comments on and edits their documents. They can also open and save files directly from Microsoft® Office Word, Excel® and PowerPoint® and synchronise contact, task and event lists with Microsoft® Office Outlook®.
- Microsoft® Office Live Workspace



Connect

Create

Communicate

Collaborate

Coordinate



למידע נוסף בקרו באתר שלנו
[http://www.microsoft.com/israel/
education/default.mspx](http://www.microsoft.com/israel/education/default.mspx)

עפר דליות

odaliot@microsoft.com